

ST. ANTHONY OF PADUA CHRISTMAS CAROLING

December 28, 2023

Hymn	O Come, All Ye Faithful <i>ADESTE FIDELES</i>	SSM #264
Hymn	Angels We Have Heard on High <i>GLORIA</i>	SSM #118
Hymn	Hark! The Herald Angels Sing <i>MENDELSSOHN</i>	SSM #209
Hymn	Away in a Manger <i>MUELLER</i>	SSM #132
Hymn	O Little Town of Bethlehem <i>ST. LOUIS</i>	SSM #275
Hymn	Joy to the World <i>ANTIOCH</i>	SSM #238
Hymn	What Child Is This? <i>GREENSLEEVES</i>	SSM #386
Hymn	The First Nowell <i>THE FIRST NOWELL</i>	SSM #350
Hymn	Silent Night <i>STILLE NACHT</i>	SSM #322

HYMN

O Come, All Ye Faithful

SSM24 #264

G D/F# G D/F# G C G/D D

1. O come, all ye faith - ful, Joy - ful and tri - um - phant, O
 2. God of God, Light of Light,
 3. Sing, choirs of an - gels, Sing in ex - ul - ta - tion,
 4. Yea, Lord, we greet thee, Born this hap - py morn - ing;
 5. *Ad - és - te, fi - dé - les, Læ - ti tri - um - phán - tes, Ve -*

Em D A D G/B D/F# Em/G D/A A7 D G/B Am G Am G

1. come ye, O come ye to Beth - le - hem; Come and be - hold him,
 2. Lo, he ab - hors not the Vir - gin's womb; Ver - y God, be -
 3. Sing, all ye cit - i - zens of heav'n a - bove: Glo - ry to God,
 4. Je - sus, to thee be all glo - ry giv'n; Word of the Fa - ther,
 5. *ní - te, ve - ní - te in Béth - le - hem. Na - tum vi - dé - te*

D/F# G Em Am/C D G

1. Born the King of an - gels;
 2. got - ten, not cre - at - ed: O come, let us a - dore him, O come, let us a -
 3. Glo - ry in the high - est; *Ve - ní - te ad - o - ré - mus, Ve - ní - te ad - o -*
 4. Now in flesh ap - pear - ing;
 5. *Re - gem an - ge - ló - rum.*

D/F# G D7/A G D/F# A7/E D D/C G/B C G/D D G

The image shows a musical score for the hymn 'Adeste Fideles'. It consists of two staves: a treble staff and a bass staff. The treble staff contains the melody, and the bass staff contains the accompaniment. Above the treble staff, a series of guitar chords is written: D/F#, G, D7/A, G, D/F#, A7/E, D, D/C, G/B, C, G/D, D, G. The lyrics are written below the treble staff. The key signature is one sharp (F#), and the time signature is 4/4. The lyrics are: 'dore him, O come, let us a - dore him, Christ the Lord. ré - mus, Ve - ní - te ad - o - ré - mus Dó - mi - num.'

Text: *Adeste Fideles*, Attr. John F. Wade; Tr. Frederick Oakeley. Melody: ADESTE FIDELES, Irregular with refrain; Attr. John F. Wade. Text and Music: Public Domain.

HYMN

Angels We Have Heard on High

SSM24 #118

F Am G7sus C7 F C F F/A

1. An - gels we have heard on high, Sweet - ly sing - ing
 2. Shep - herds, why this ju - bi - lee? Why your joy - ous
 3. Come to Beth - le - hem, and see Him whose birth the
 4. See Him in a man - ger laid, Whom the choirs of

F/C C7 F Am Dm C7/E F

1. o'er the plains; And the moun - tains in re - ply,
 2. strains pro - long? Say what may the tid - ings be
 3. an - gels sing; Come, a - dore on bend - ed knee
 4. an - gels praise; Mar - y, Jo - seph, lend your aid,

C F F/A F/C C7 F F Dm Dm/F Gm C C/E F Bb Bb/D

1. Ech - o - ing their joy - ous strains. - - - -
 2. Which in - spire your heav'n - ly song? Gló -
 3. Christ the Lord, the new - born King.
 4. While our hearts in love we raise.

C/E C C/B \flat F/A C F Gm/B \flat F/C C F Dm Dm/F Gm C C/E F B \flat B \flat /D

- ri-a in ex-cél-sis De-o! Gló - - - - -

Detailed description: This system contains the first two staves of music. The top staff is in treble clef with a key signature of one flat (Bb). The bottom staff is in bass clef. The melody in the top staff begins with a dotted quarter note on G4, followed by an eighth note on A4, and a quarter note on Bb4. The accompaniment in the bottom staff consists of chords: C/E, C, C/Bb, F/A, C, F, Gm/Bb, F/C, C, F, Dm, Dm/F, Gm, C, C/E, F, Bb, Bb/D. The lyrics are: "- ri-a in ex-cél-sis De-o! Gló - - - - -".

C/E C C/B \flat F/A C F B \flat F/C C7 F

- ri-a in ex-cél-sis De - o!

Detailed description: This system contains the next two staves of music. The top staff is in treble clef with a key signature of one flat (Bb). The bottom staff is in bass clef. The melody in the top staff continues from the previous system with a dotted quarter note on G4, an eighth note on A4, and a quarter note on Bb4. The accompaniment in the bottom staff consists of chords: C/E, C, C/Bb, F/A, C, F, Bb, F/C, C7, F. The lyrics are: "- ri-a in ex-cél-sis De - o!".

Text: *Les Anges dans nos campagnes*, 18 c. French; Tr. James Chadwick; Alt. Henri Hemy. Melody: GLORIA, 7.7.7.7 with refrain; Trad. French carol. Text and Music: Public Domain.

HYMN

Hark! The Herald Angels Sing

SSM24 #209

F F/A F F/C C F/A Gm/Bb F/C C

1. Hark! The her - ald an - gels sing: "Glo - ry to the new - born
 2. Christ, by high - est heav'n a - dored, Christ, the ev - er - last - ing
 3. Hail, the heav'n - born Prince of peace! Hail, the Sun of right - eous-

F Dm F/C G7sus G7 Am G/B C C/E FM7 G7

1. King! Peace on earth, and mer - cy mild: God and sin - ners rec - on -
 2. Lord, Late in time, be - hold him come: Off - spring of the Vir - gin's
 3. ness! Light and life to all he brings, Ris'n with heal - ing in his

C N.C. F/A C7/E F F/C C N.C. F/A C7/E F

1. ciled!" Joy - ful, all ye na - tions, rise; Join the tri - umph of the
 2. womb. Veiled in flesh, the God - head see. Hail, the in - car - nate De - i -
 3. wings. Mild, he lays his glo - ry by, Born that man no more may

F/C C B \flat Gm/B \flat D Gm C C/B \flat

1. skies; With the an - gel - ic host pro - claim: "Christ is
 2. ty, Pleased as man with men to dwell: Je - sus,
 3. die, Born to raise the sons of earth; Born to

F/A F F/C C F B \flat F/A Gm D Gm C/E C/B \flat

1. born in Beth - le - hem!"
 2. our E - ma - nu - el! Hark! The her - ald an - gels sing: "Glo - ry
 3. give them sec - ond birth.

F/A F F/C C7 F

to the new - born King!"

Text: *Hark! how all the welkin rings*, Charles Wesley; Alt. George Whitefield. Melody: MENDELSSOHN, 7.7.7.7 D with refrain; William H. Cummings, after Felix Mendelssohn. Text and Music: Public Domain.

HYMN

O Little Town of Bethlehem

SSM24 #275

F Fdim F Ebm/Bb Gm/Bb F/C C7

1. O lit - tle town of Beth - le - hem, How still we see thee
 2. For Christ is born of Mar - y, And gath - ered all a -
 3. How si - lent - ly, how si - lent - ly The won - drous gift is
 4. O ho - ly Child of Beth - le - hem! De - scend to us, we

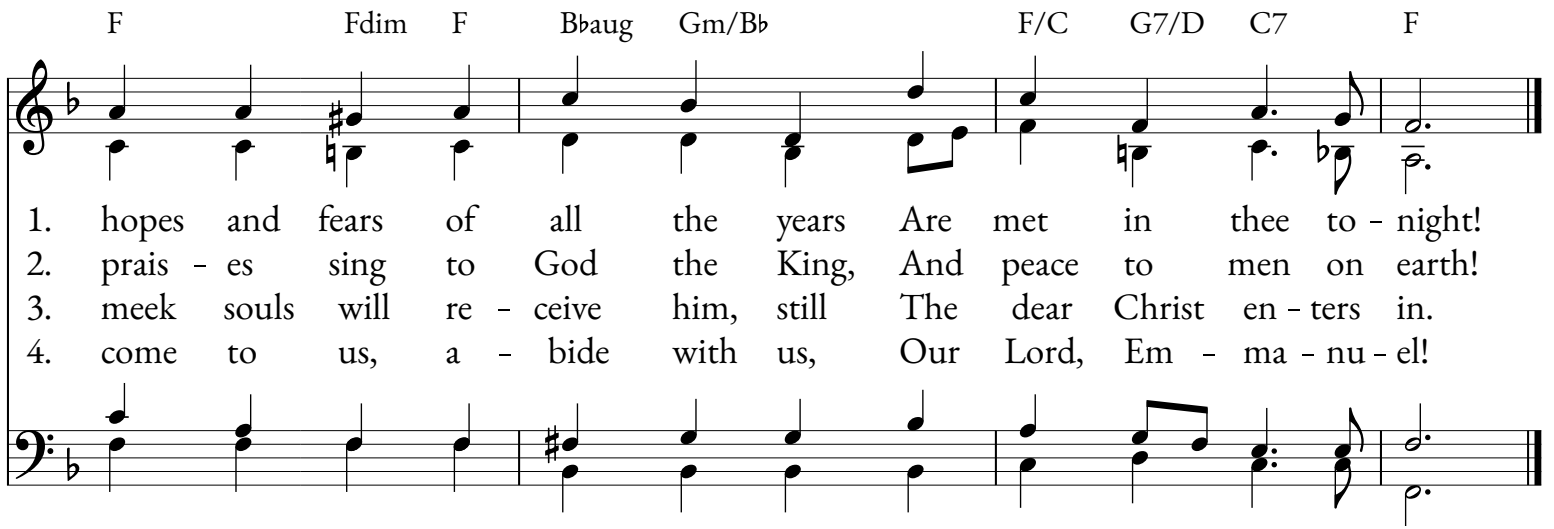
F D7 Gsus Gm Gm/Bb F/C C7

1. lie! A - bove thy deep and dream - less sleep The si - lent stars go
 2. bove, While mor - tals sleep, the an - gels keep Their watch of won - d'ring
 3. giv'n! So God im - parts to hu - man hearts The bless - ings of his
 4. pray; Cast out our sin, and en - ter in, Be born in us to -

F Edim/G G#dim7 A N.C. Gm/Bb A

1. by; Yet in thy dark streets shin - eth The ev - er - last - ing Light; The
 2. love. O morn - ing stars, to - geth - er Pro - claim the ho - ly birth, And
 3. heav'n. No ear may hear his com - ing, But in this world of sin, Where
 4. day! We hear the Christ - mas an - gels The great glad tid - ings tell; O

F Fdim F Bbaug Gm/Bb F/C G7/D C7 F



1. hopes and fears of all the years Are met in thee to - night!
 2. prais - es sing to God the King, And peace to men on earth!
 3. meek souls will re - ceive him, still The dear Christ en - ters in.
 4. come to us, a - bide with us, Our Lord, Em - ma - nu - el!

Text: Phillips Brooks. Melody: ST. LOUIS, 8.6.8.6.7.6.8.6; Lewis H. Redner. Text and Music: Public Domain.

HYMN

Joy to the World

SSM24 #238

D Em/G D/A A7 D D/F# G A D

1. Joy to the world! The Lord is come; Let earth re - ceive her King;
 2. Joy to the world! The Sav - ior reigns; Let men their songs em - ploy;
 3. No more let sins and sor - rows grow, Nor thorns in - fest the ground;
 4. He rules the world with truth and grace And makes the na - tions prove

G/D D G/D D

1. Let eve - ry heart pre - pare him room, And heav'n and na - ture
 2. While fields and floods, rocks, hills and plains Re - peat the sound - ing
 3. He comes to make His bless - ings flow Far as the curse is
 4. The glo - ries of his right - eous - ness, And won - ders of his

A A7 D D Em/G D/A A7 D

1. sing, And heav'n and na - ture sing, And heav'n, and heav'n and na - ture sing.
 2. joy, Re - peat the sound - ing joy, Re - peat, re - peat the sound - ing joy.
 3. found, Far as the curse is found, Far as, far as, the curse is found.
 4. love, And won - ders of his love, And won - ders, won - ders of his love.

HYMN

What Child Is This?

SSM24 #386

Em D/F# G D Em Am/C B

1. What child is this who, laid to rest On Mar-y's lap is sleep-ing?
 2. Why lies he in such mean es - tate, Where ox and ass are feed-ing?
 3. So bring him in - cense, gold and myrrh, Come peas - ant, king to own him;

Em D/F# G D Em Am B Esus Em

1. Whom an - gels greet with an - thems sweet, While shep - herds watch are keep - ing?
 2. Good Chris - tians, fear, for sin - ners here The si - lent Word is plead - ing.
 3. The King of kings sal - va - tion brings, Let lov - ing hearts en - throne him.

Bm G D Em Am/C B

1. This, this is Christ the King, Whom shep - herds guard and an - gels sing;
 2. Nails, spear shall pierce him through, The cross be borne for me, for you.
 3. Raise, raise a song on high, The vir - gin sings her lull - a - by.

Bm G D Em Am B Esus Em

1. Haste, haste, to bring him laud, The babe, the son of Mar - y.
 2. Hail, hail the Word made flesh, The babe, the son of Mar - y.
 3. Joy, joy for Christ is born, The babe, the son of Mar - y.

Text: William C. Dix. Melody: GREENSLEEVES, 8.7.8.7 with refrain; Trad. English. Text and Music: Public Domain.

HYMN

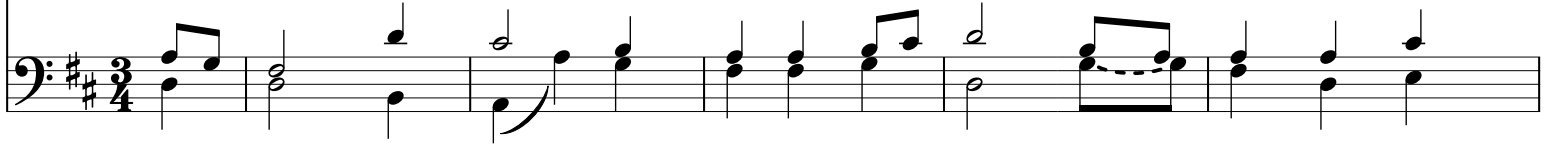
The First Nowell

SSM24 #350

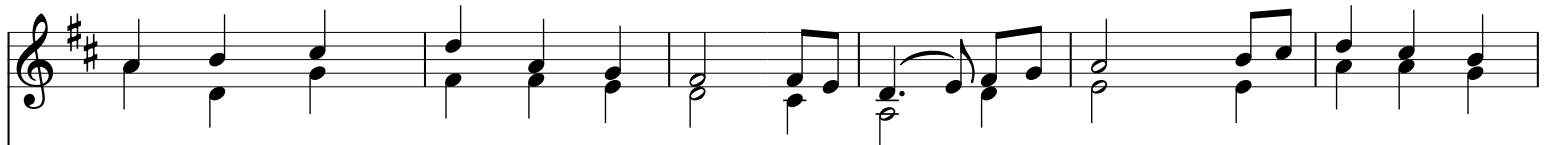
D Bm A Em/G D/F# G D G D/F# D C#dim/E



1. The first Now - ell the an - gel did say Was to cer - tain poor
2. They look - èd up and saw a star Shin - ing in the
3. And by the light of that same star Three Wise Men
4. This star drew nigh to the north - west, O'er Beth - le -
5. Then en - tered in those Wise Men three, Full rev - 'rent -
6. Then let us all with one ac - cord Sing prais - es



D/F# G C#dim/E D/F# D/A A7 D A7 D Bm Asus A Em/G D/F# G



1. shep - herds in fields as they lay; In fields where they lay tend - ing their
2. east, be - yond them far; And to the earth it gave great
3. came from coun - try far; To seek a King was their in -
4. hem it took its rest; And there it did both stop and
5. ly up - on the knee, And of - fered there, in his pres -
6. to our heav'n - ly Lord; Who has made heav'n and earth of



D G D/F# D C#dim/E D/F# G C#dim/E D/F# D/A A7 D A7 D Bm

1. sheep, On a cold win-ter's night that was so deep.
 2. light, And so it con - tin - ued both day and night.
 3. tent, And to fol - low the star wher - e'er it went. Now-ell, Now -
 4. stay, Right o - ver the place where Je - sus lay.
 5. ence, Their gold and myrrh and frank - in - cense.
 6. naught, And with his blood man - kind has bought.

F#m D G G/B D A/C# Bm D/A G D C#dim/E D/F# D/A A7 D

ell, Now - ell, Now - ell, Born is the King of Is - ra - el.

Text: 18th c. English. Melody: THE FIRST NOWELL, Irregular; Trad. English. Text and Music: Public Domain.

HYMN

Silent Night

SSM24 #322

B \flat F7 B \flat

1. Si - lent night, ho - ly night, All is calm, all is bright
 2. Si - lent night, ho - ly night, Shep - herds quake at the sight;
 3. Si - lent night, ho - ly night, Son of God, love's pure light;

E \flat B \flat E \flat

1. Round yon vir - gin moth - er and Child. Ho - ly In - fant, so
 2. Glo - ries stream from heav - en a - far, Heav'n - ly hosts — sing,
 3. Ra - diant beams from thy ho - ly face With the dawn of re -

B \flat F7 B \flat B \flat /F F7 B \flat

1. ten - der and mild, Sleep in heav - en - ly peace, Sleep in heav - en - ly peace.
 2. "Al - le - lu - ia! Christ the Sav - ior is born, Christ the Sav - ior is born!"
 3. deem - ing grace, Je - sus, Lord, at thy birth, Je - sus, Lord, at thy birth.

This reproduced work was produced using Source & Summit (sourceandsummit.com) by subscriber #006078 and is subject to those terms and restrictions governing its use.



source & summit